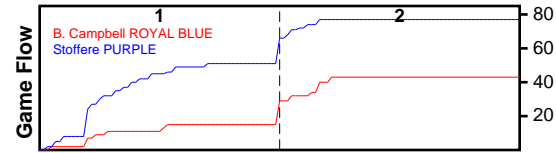


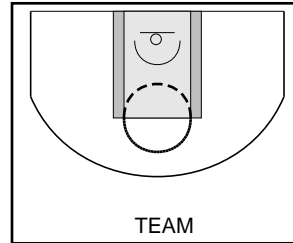
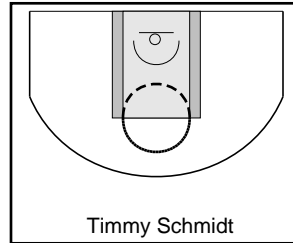
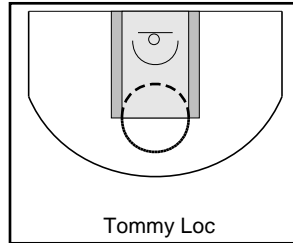
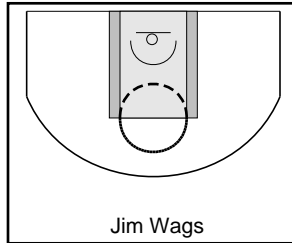
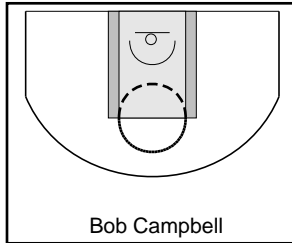
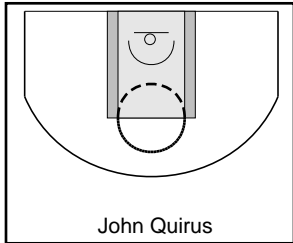
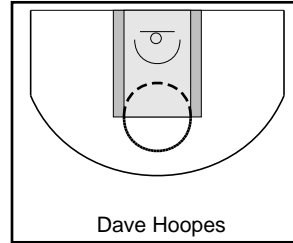
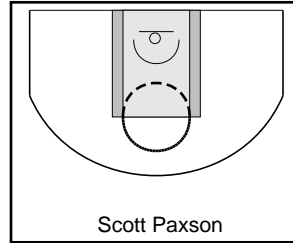
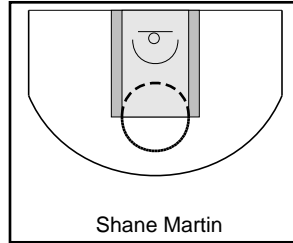
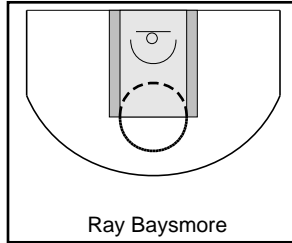
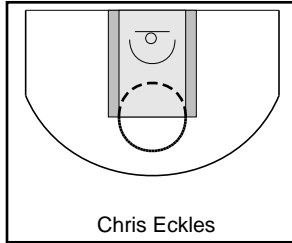
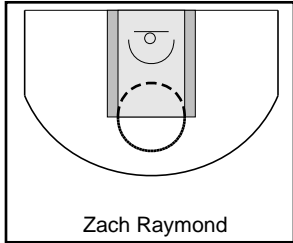
# B. Campbell ROYAL BLUE

5/15/17 B. Campbell ROYAL BLUE at Stoffere PURPLE

	1	2	T
B. Campbell	15	28	43
Stoffere PURPLE	51	26	77



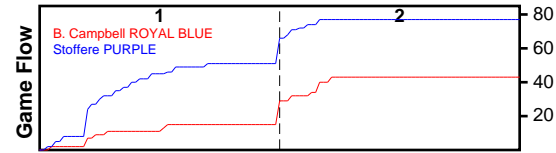
#	Name	G	MIN	FGM	FGA	FG%	2PM	2PA	2P%	3PM	3PA	3P%	FTM	FTA	FT%	OREB	DREB	REB	AST	STL	BLK	DEF	TO	PF	CHG	PM	PTS	
0	Zach Raymond	0	0	0	0	.000	0	0	.000	0	0	.000	0	0	.000	0	0	0	0	0	0	0	0	0	0	0	0	
0	Chris Eckles	0	0	0	0	.000	0	0	.000	0	0	.000	0	0	.000	0	0	0	0	0	0	0	0	0	0	0	0	
0	Ray Baysmore	1	20	0	2	.000	0	1	.000	0	1	.000	1	2	.500	0	0	0	1	0	0	0	0	0	0	0	1	1
0	Shane Martin	0	0	0	0	.000	0	0	.000	0	0	.000	0	0	.000	0	0	0	0	0	0	0	0	0	0	0	0	
0	Scott Paxson	0	0	0	0	.000	0	0	.000	0	0	.000	0	0	.000	0	0	0	0	0	0	0	0	0	0	0	0	
0	Dave Hoopes	0	0	0	0	.000	0	0	.000	0	0	.000	0	0	.000	0	0	0	0	0	0	0	0	0	0	0	0	
0	John Quirus	1	21	5	7	.714	5	7	.714	0	0	.000	0	0	.000	1	3	4	2	2	0	0	1	1	0	-35	10	
4	Bob Campbell	1	40	9	19	.474	4	9	.444	5	10	.500	0	0	.000	0	0	0	0	0	0	0	0	1	0	-34	23	
5	Jim Wags	1	40	1	3	.333	1	2	.500	0	1	.000	0	0	.000	0	3	3	2	0	0	0	0	2	0	-34	2	
12	Tommy Loc	1	40	0	6	.000	0	6	.000	0	0	.000	0	2	.000	4	1	5	0	1	0	0	0	3	0	-34	0	
20	Timmy Schmidt	1	40	3	7	.429	3	7	.429	0	0	.000	1	4	.250	6	5	11	3	1	0	0	1	0	0	-34	7	
	TEAM	0	0	0	0	.000	0	0	.000	0	0	.000	0	0	.000	0	0	0	0	0	0	0	0	0	0	0	0	
	<b>TOTALS</b>	<b>1</b>	<b>40</b>	<b>18</b>	<b>44</b>	<b>.409</b>	<b>13</b>	<b>32</b>	<b>.406</b>	<b>5</b>	<b>12</b>	<b>.417</b>	<b>2</b>	<b>8</b>	<b>.250</b>	<b>11</b>	<b>12</b>	<b>23</b>	<b>8</b>	<b>4</b>	<b>0</b>	<b>0</b>	<b>2</b>	<b>7</b>	<b>0</b>	<b>-34</b>	<b>43</b>	



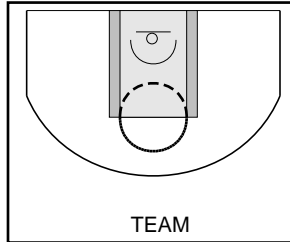
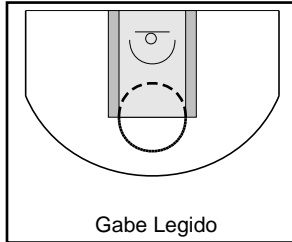
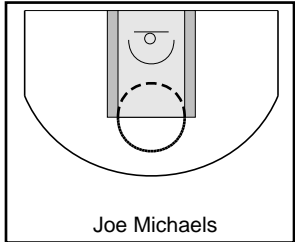
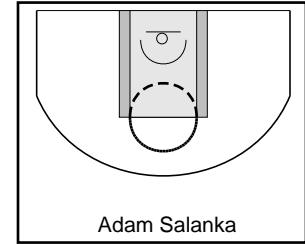
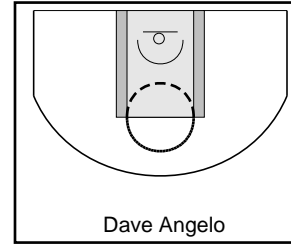
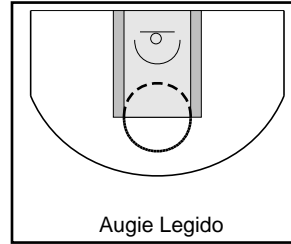
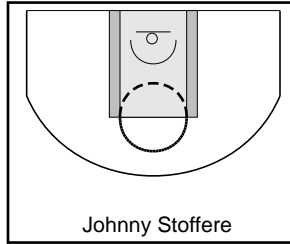
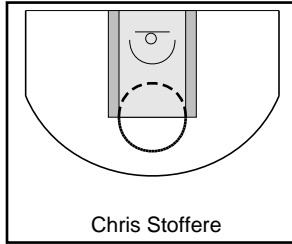
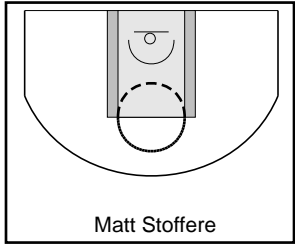
# Stoffere PURPLE

5/15/17 B. Campbell ROYAL BLUE at Stoffere PURPLE

	1	2	T
B. Campbell	15	28	43
Stoffere PURPLE	51	26	77



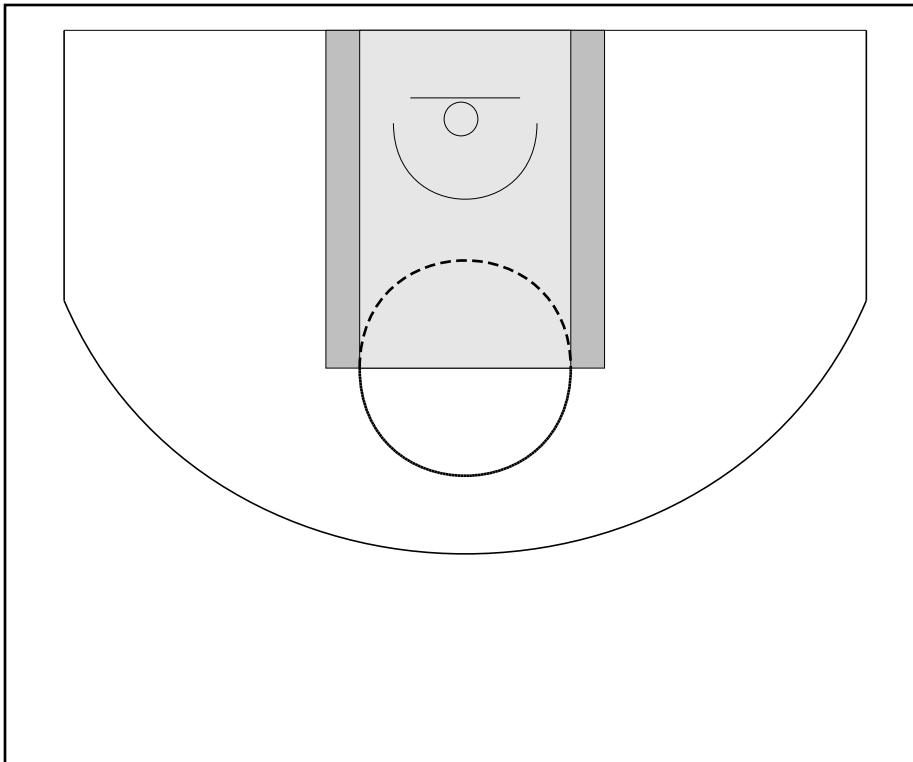
#	Name	G	MIN	FGM	FGA	FG%	2PM	2PA	2P%	3PM	3PA	3P%	FTM	FTA	FT%	OREB	DREB	REB	AST	STL	BLK	DEF	TO	PF	CHG	PM	PTS
0	Matt Stoffere	0	0	0	0	.000	0	0	.000	0	0	.000	0	0	.000	0	0	0	0	0	0	0	0	0	0	0	0
3	Chris Stoffere	1	34	3	7	.429	0	2	.000	3	5	.600	0	0	.000	0	2	2	6	1	1	0	0	0	0	18	9
4	Johnny Stoffere	1	28	9	14	.643	5	8	.625	4	6	.667	0	0	.000	0	1	1	5	3	1	0	0	0	0	25	22
5	Augie Legido	1	24	7	15	.467	1	3	.333	6	12	.500	0	0	.000	0	0	0	5	2	0	0	0	1	0	39	20
10	Dave Angelo	1	11	5	7	.714	5	7	.714	0	0	.000	1	2	.500	0	1	1	1	1	0	0	1	1	0	30	11
11	Adam Salanka	1	40	3	6	.500	2	2	1.000	1	4	.250	0	0	.000	1	1	2	1	3	0	0	0	1	0	25	7
12	Joe Michaels	1	30	0	2	.000	0	1	.000	0	1	.000	1	2	.500	0	3	3	0	1	0	1	0	3	0	11	1
13	Gabe Legido	1	36	2	6	.333	0	0	.000	2	6	.333	1	2	.500	1	2	3	2	0	0	0	0	0	0	22	7
	TEAM	0	0	0	0	.000	0	0	.000	0	0	.000	0	0	.000	0	0	0	0	0	0	0	0	0	0	0	0
	<b>TOTALS</b>	<b>1</b>	<b>40</b>	<b>29</b>	<b>57</b>	<b>.509</b>	<b>13</b>	<b>23</b>	<b>.565</b>	<b>16</b>	<b>34</b>	<b>.471</b>	<b>3</b>	<b>6</b>	<b>.500</b>	<b>2</b>	<b>10</b>	<b>12</b>	<b>20</b>	<b>11</b>	<b>2</b>	<b>1</b>	<b>1</b>	<b>6</b>	<b>0</b>	<b>34</b>	<b>77</b>



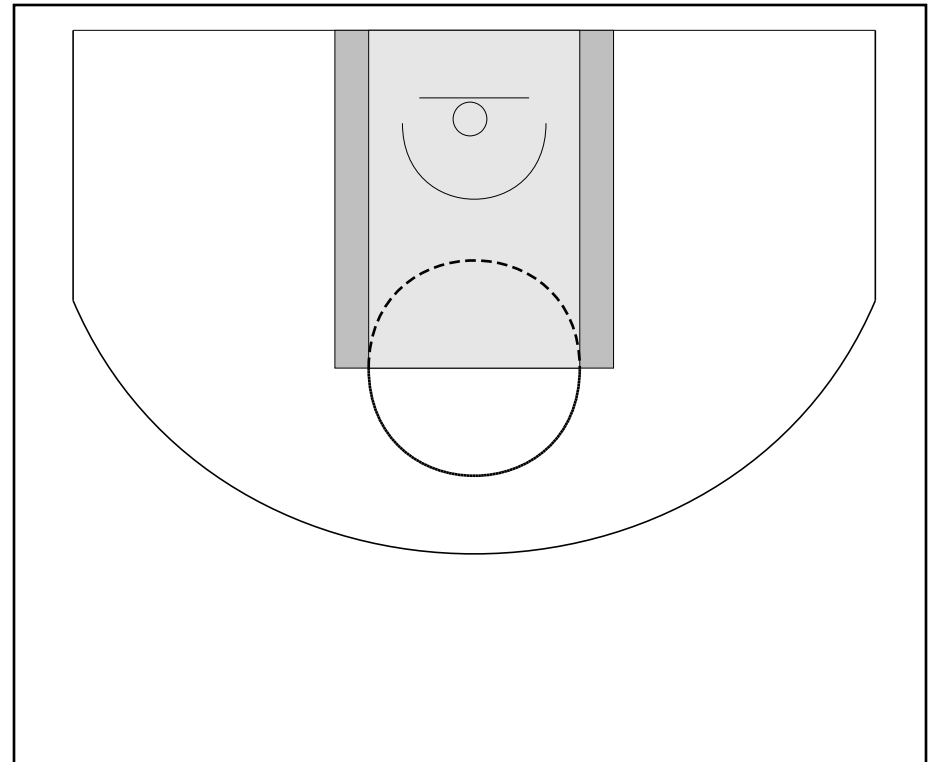
## Game Summary Comparison

Statistic	B. Campbell ROYAL BLUE	Stoffere PURPLE
Points	43	77
<i>Field Goals</i>	18 / 44	29 / 57
<i>2 Point</i>	13 / 32	13 / 23
<i>3 Point</i>	5 / 12	16 / 34
<i>Free Throws</i>	2 / 8	3 / 6
Assists	8	20
Rebounds	23	12
<i>Offensive</i>	11	2
<i>Defensive</i>	12	10
Blocks	0	2
Steals	4	11
Deflections	0	1
Turnovers	2	1
Charges Taken	0	0
Personal Fouls	7	6

B. Campbell ROYAL BLUE



Stoffere PURPLE



### B. Campbell ROYAL BLUE Turnovers

Period	Clock	Player	Turnover Type
2nd Period	19:53	#0 John Quirus	Other
2nd Period	19:53	#20 Timmy Schmidt	Other

### B. Campbell ROYAL BLUE Fouls

Period	Clock	Player	Foul
1st Period	15:58	#4 Bob Campbell	Pushing (Def)
1st Period	15:58	#12 Tommy Loc	Blocking (Def)
1st Period	9:51	#12 Tommy Loc	Blocking (Def)
1st Period	9:12	#12 Tommy Loc	Blocking (Def)
1st Period	5:26	#0 John Quirus	Holding (Def)
2nd Period	19:53	#5 Jim Wags	Reaching in (Def)
2nd Period	18:06	#5 Jim Wags	Pushing (Def)

### Stoffere PURPLE Turnovers

Period	Clock	Player	Turnover Type
2nd Period	19:53	#10 Dave Angelo	Other

### Stoffere PURPLE Fouls

Period	Clock	Player	Foul
1st Period	11:05	#11 Adam Salanka	Blocking (Def)
1st Period	8:03	#12 Joe Michaels	Pushing (Def)
1st Period	6:55	#5 Augie Legido	Blocking (Def)
2nd Period	19:53	#12 Joe Michaels	Pushing (Def)
2nd Period	19:53	#10 Dave Angelo	Blocking (Def)
2nd Period	16:29	#12 Joe Michaels	Blocking (Def)